



**CE**

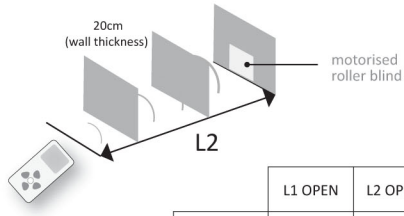
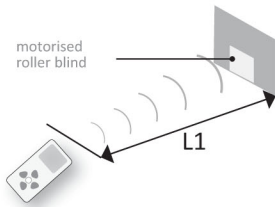
All controls support 433MHz  
All controls support 230V/50Hz

Electronic  
Electronic Limit + Built-in Receiver



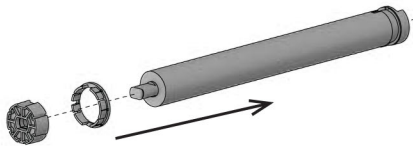
Electronic Tubular Motor

**CONTROL RANGE**

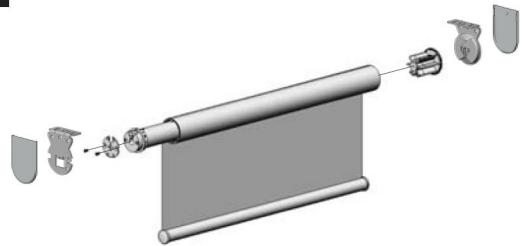


	L1 OPEN	L2 OPERATION	EMISSION FREQUENCY	
	230v/50H	200m	35m	433.92MHz

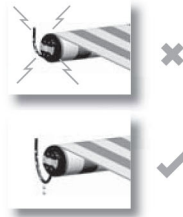
**1 DRIVE & CROWN WHEEL INSTALLATION**



**2 BRACKET & DISC ADAPTER INSTALLATION**

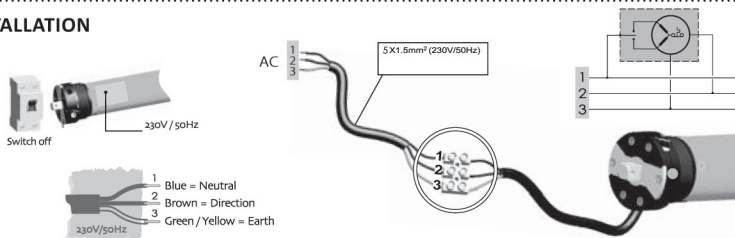


**WARNING**



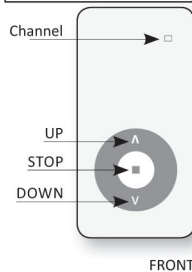
CREATE A PATH FOR WATER TO RUN OFF TO AVOID CONTACTING MOTOR HEAD

**CIRCUIT INSTALLATION**

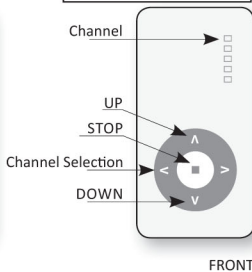


# REMOTE OVERVIEW

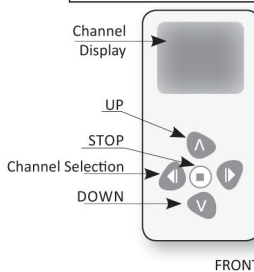
## SINGLE CHANNEL REMOTE



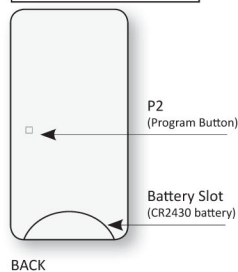
## FIVE CHANNEL REMOTE



## MULTI CHANNEL REMOTE



## ALL REMOTES



## BEFORE YOU BEGIN:

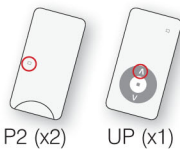
- PLEASE READ INSTRUCTIONS BEFORE USE
- PLACE CR2430 BATTERY INTO REMOTE

## PROGRAMMING A MOTOR

### 1 PAIRING MOTOR TO REMOTE

- Switch motor power on (motor will beep x 5 times & jolt)
- Ensure pairing commences within 10 seconds of turning motor on.

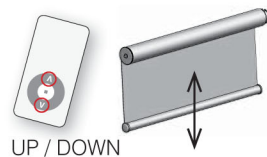
- 1a. Press P2 button ( x 2 )
- 1b. Press UP button ( x 1 )



Motor will beep with each button pressed.  
To confirm pairing, motor will beep x3 times and jolt up and down.

### 2 CHECK BLIND DIRECTION

- 2a. Press UP & DOWN buttons and ensure blind is moving in correct direction.  
If working correctly proceed to Step 3.



#### TO CORRECT BLIND DIRECTION

#### OPTION 1

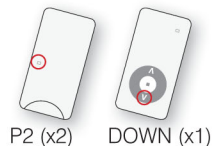
- 2b. Press button on motor head for 5 seconds to change orientation of blind.  
Motor beeps & jolts to confirm change of direction.



Re-confirm Step 2a.

#### OPTION 2

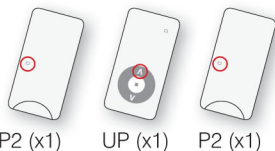
- 2c. Switch power off for 10 seconds, then switch back on.
  - 2d. Press P2 button ( x 2 )
  - 2e. Press DOWN button ( x 1 )
- Motor will beep x4 times and jolt.



### 3 SETTING UP/DOWN LIMITS

#### PUT MOTOR IN LIMIT SETTING MODE

- 3a. Press P2 button (x1)
- 3b. Press UP button (x1)
- 3c. Press P2 button (x1)



To confirm setting mode, motor will beep x3 times and jolt up and down.

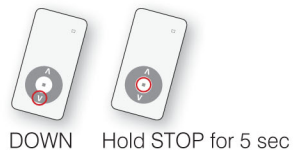
### 4 SET UPPER LIMIT FIRST

- 4a. Set desired upper limit position first.  
(using UP and DOWN buttons)
- 4b. Press STOP for 5 seconds until motor confirms position.



#### SET LOWER LIMIT

- 4c. Set desired lower limit position  
(using UP and DOWN buttons)
- 4d. Press STOP for 5 seconds until motor confirms position.



To confirm limit, motor will jolt down and up.

#### TIP

When a more accurate setting is required the motor can move up/down in a stepping mode, rather than continuously. To put motor in stepping mode: While motor is moving up/down, press P2 button. This will cause motor to move up/down step by step.

**LIMITS ARE NOW CONFIRMED AND BLIND IS READY FOR USE**

## CANCELLING A REMOTE FROM THE MOTOR

### CANCEL A REMOTE FROM THE MOTOR

1. Press P2 button (x1)
2. Press STOP button (x1)
3. Press P2 button (x1)

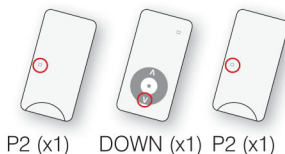


To confirm cancellation of remote motor will beep x3 times and jolt up and down.

TO RE-PROGRAM MOTOR PROCEED TO STEP 3 OF PROGRAMMING INSTRUCTIONS

### DELETING LIMITS

1. Press P2 button (x1)
2. Press DOWN button (x1)
3. Press P2 button (x1)



To confirm cancellation of remote motor will beep x3 times and jolt up and down.

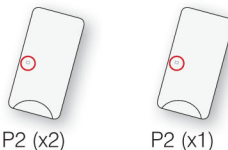
TO RE-SET LIMITS PROCEED TO STEP 3 OF PROGRAMMING INSTRUCTIONS

## COPYING LIMITS TO A SECOND REMOTE (OR CHANNEL)

1. Press P2 (x2) on channel already programmed (Remote 1)
2. Press P2 (x1) on desired channel to copy limits onto (Remote 2)

REMOTE 1

REMOTE 2



To confirm recognition of limit transfer, motor will beep x3 times and jolt up and down.

LIMITS ARE NOW COPIED

## PROGRAMMING WITH A FIVE OR MULTI-CHANNEL REMOTE

### ONLY ONE MOTOR CAN BE ON DURING PROGRAMMING

- 1a. Ensure MOTOR 1 is ON and all other motors are off.
- 1b. Use channel selection arrows to select preferred channel.
- NOTE: If motor is on Channel 00, motor will not pair with remote.
- 1c. Complete steps 1 - 4 [Programming a motor]



CHANNEL SELECTION



CHANNEL DISPLAY

Channel number will display on screen

- 2a. Turn MOTOR 2 ON. [Ensure all other motors are turned off]
- 2b. Use channel selection arrows to select NEXT preferred channel
- 2c. Complete steps 1 - 4 [Programming a motor]

Continue to follow the same procedure described above with more motors.  
It is possible to programme up to 20 motors on 1 channel.

ONCE ALL BLINDS HAVE BEEN PROGRAMMED, TO OPERATE ALL BLINDS TOGETHER;

#### FIVE CHANNEL REMOTE

1. Press channel selection until all five lights are lit up.

FIVE CHANNEL REMOTE



FIFTEEN CHANNEL REMOTE



#### FIFTEEN CHANNEL REMOTE

1. Press channel selection until channel 00 appears.
2. Operate blinds as per usual.

# TROUBLESHOOTING AUTOMATE S45

TECHNICAL DATA	
Power supply	230V/50Hz
Capacity	6Nm 28 Rpm
Frequency	433.92MHz
Running time	4 minutes
Operating temperature	-10°C to 40°C
Protective rating	IP44
Current	0.53 amps
Consumption	121 watts

Incorrect operation can often be from incorrect setup of programming. Always read instructions before you begin.

The installer will guide you on how to use the product for worry free performance.

PROBLEM	SOLUTION
Motor does not respond when power is turned on.	<ol style="list-style-type: none"> <li>1. Check that the power is switched on.</li> <li>2. Check power connection to unit is completed by certified electrician.</li> </ol>
Motor has stopped working.	<ol style="list-style-type: none"> <li>1. If the motor has been used consistently for a long period of time, the motor cuts off for safety reasons. Allow motor to cool down before operating again.</li> <li>2. Check you are within distance of operating motor.</li> <li>3. Check the remote has batteries.</li> </ol>
The motor does not respond when I use the remote.	<ol style="list-style-type: none"> <li>1. The light on a single or five channel remote illuminates when any button is pressed. If the light does not illuminate, check that (a) the battery is inserted correctly and (b) the battery CR2430 needs replacing. On a 15 channel remote digital numbers appear. If this is blank, check as above.</li> </ol>

## FOR INSTALLERS:

PROBLEM	SOLUTION
Motor has stopped working.	<ol style="list-style-type: none"> <li>1. Check wiring of motor</li> <li>2. Check power supply specifications</li> <li>3. Check compatibility of the control</li> <li>4. Allow motor to cool down if it has been operated for long periods.</li> <li>5. Check you are within distance of operating motor</li> </ol>
The motor does not respond when I use the remote.	<ol style="list-style-type: none"> <li>1. Check if the remote has to be paired to the motor. (follow programming instructions to pair motor with remote) Motor limits will need to be reset.</li> <li>2. On a 15 channel remote, if LCD screen remains blank check as above.</li> </ol>
Motor is not responding to remote.	<ol style="list-style-type: none"> <li>1. Check remote has working battery</li> <li>2. With Single Channel remote ONLY 1 Motor can be programmed at any given time. Check that all other motors are turned off during programming multiple motors on 1 channel.</li> <li>3. Check surrounding environment for possible RF interference including: mobile phones, RF house phones, LED and plasma TV's, microwaves, fluorescent lights, lighting dimmers, computers etc.</li> <li>4. Check motor antenna is not touching metal surfaces of bracketing or window trim or power source wiring.</li> </ol>
Blind is operating opposite direction to up and down buttons.	<ol style="list-style-type: none"> <li>1. Motor direction orientation needs to be changed. Follow programming instructions 2 to change the motor direction. If limits have been set, they will need to be reset after changing orientation of blind.</li> </ol>
Motor is moving in step by step mode (not continuously) during programming.	<ol style="list-style-type: none"> <li>1. When programming the limits of a motor, there is the opportunity to put the motor into a step-turning mode (instead of a continuous turning) for a more accurate setting of the limit. The motor is in this mode because the p2 button has been pressed during the setting of limits. Press the Up or down button and motor will go back to turning continuously.</li> </ol>